



INSTALLATION MANUAL **INSTALLATIONSANLEITUNG**

R059 with hook to pitch roof
R059 mit Haken

1. Installation tools

1. Werkzeuge



Allen wrench
(M8-M12)
Innensechskantschlüssel
(M8-M12)



Tape Measure
Meßband



Twist Wrench
(M8-M12)
Schraubenschlüssel
(M8-M12)



Wood Hammer
Holzhammer



Electric Screw Machine
Elektrische Schraubenmaschine



Wrench
(M8-M12)
Schlüssel
(M8-M12)



Rope
Seil



Sleeve
Hülse



Awning Turned
Markise gedreht

2. Components List

2. Komponentenliste



Rail
Schiene



Rail Splice
Schienenverbindung



End Clamp
Endklemme



Mid Clamp
Mittelklemme



Hook
Haken



Bolt
Bolzen



Wooden Screws
Holzschrauben



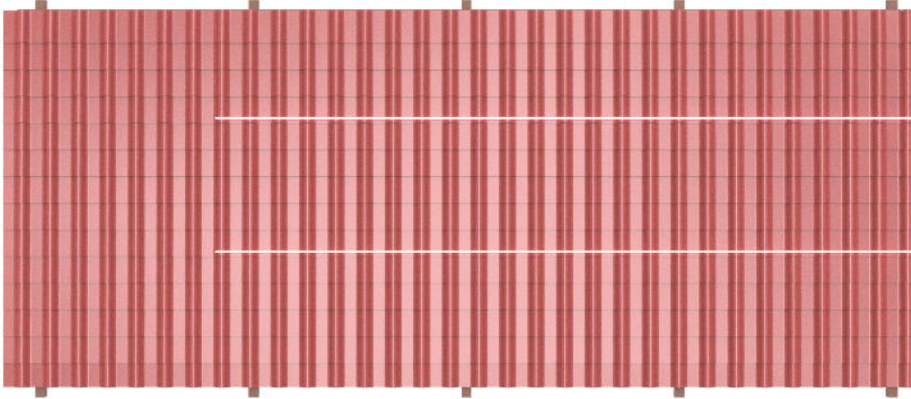
Rail Cap
Schienenkappe

3. Installation Step

3.Installationsschritt

3.11 Measure and confirm the site for Hanger Set

3.11 Messen und bestätigen Sie die Stelle für den Holzsparren



3.21 Lifting the ceramic tiles

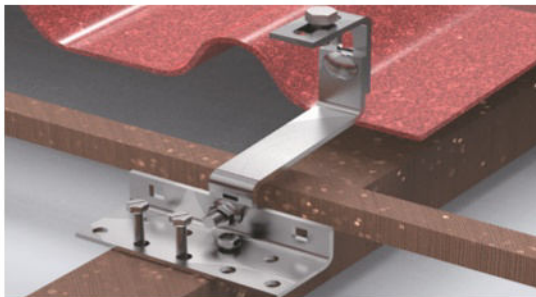
3.21 Heben Sie die Dachziegel an

3.22 Drill the wooden screw to wooden pulin

3.22 Nehmen Sie Holzschrauben und schrauben Sie diese entsprechend der Positionierungspunkte senkrecht auf dem Dach in die Holzbalken ein

3.23 Tightening the bolt of Hook

3.23 Anziehen der Hakenschraube



3.24 Completed

3.24 Die Haken werden nacheinander angebracht, dann fertig



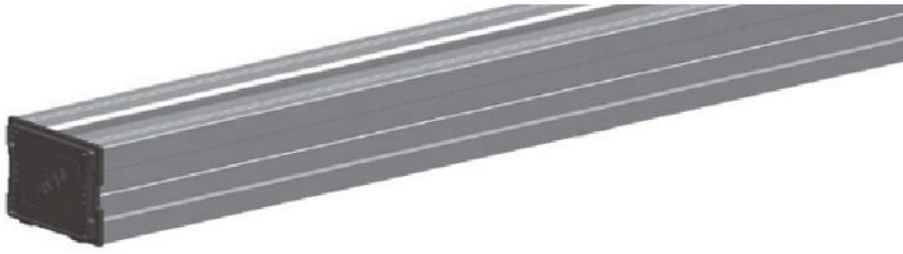
3.3 Put the M10*25mm bolt into the railing ,and then lock under the railing

3.3 Sehen Sie sich die Zeichnung an und schieben Sie die Nut an der Unterseite Schiene in den installierten Schraubenkopf M10*25, wie in der Abbildung gezeigt



3.4 Install Railing Cap

3.4 Installieren Sie die Schienenkappe



3.5 If the length is not enough, using rail splice to connect

3.5 Wenn die Länge nicht ausreicht, verwenden Sie zum Verbinden eine Schienenverbindung

Note: Install 2pcs of railing splice to the end of different railing, and drill the self-drilling screws

Hinweis: Bringen Sie zwei Schienenverbindungen am Ende der anderen Schiene an und bohren Sie die selbstbohrenden Schrauben



Completed railing installation

Die Installation der Schiene ist abgeschlossen



3.6 Install the solar panel on the end of railing (leave about 600mm span to lock End Clamp)

3.6 Installieren Sie das Solarpanel am Ende der Schiene (lassen Sie etwa 600 mm Abstand, um die Endklemme zu verriegeln)

Step1: Directly press the End clamp into the railing

Schritt1: Drücken Sie die Endklemme direkt in die Schiene

Step2: Tightening the bolt of end clamp

Schritt2: Anziehen der Schraube der Endklemme



3.7 Install the mid clamp

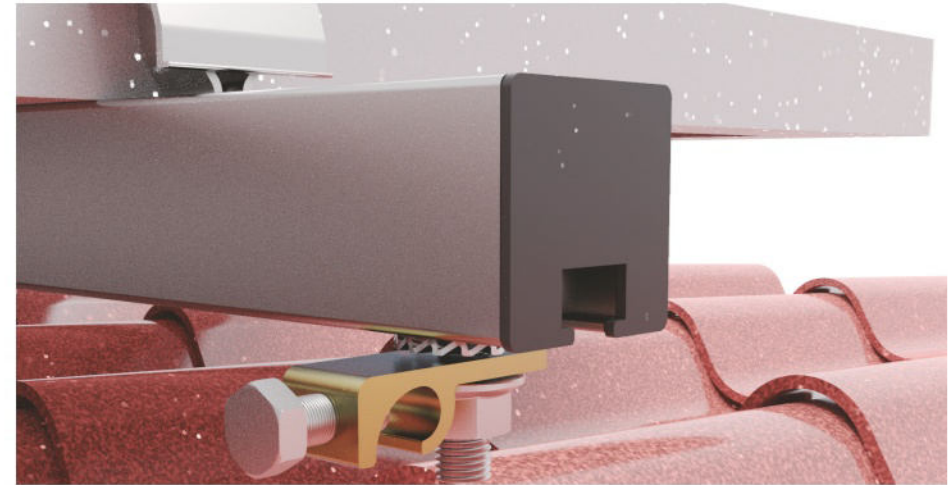
3.7 Installieren Sie die Mittelklemme

Step1: Directly press the End clamp into the railing, and put the 2nd panel

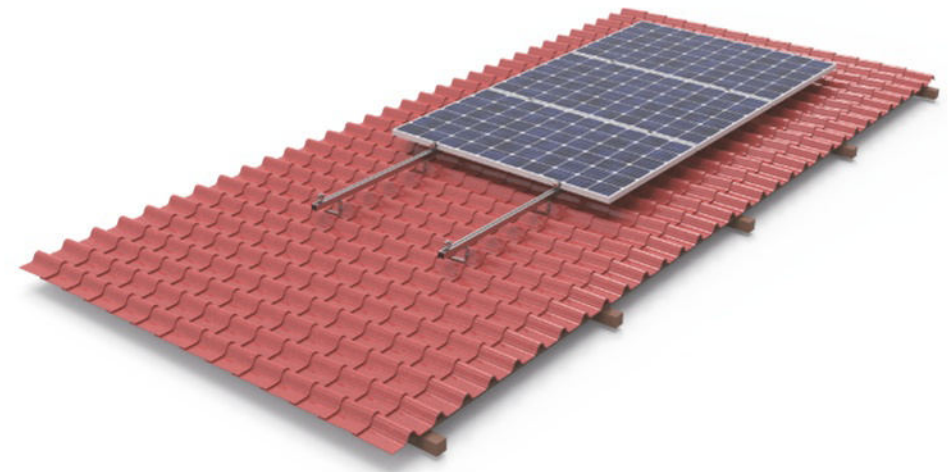
Schritt1: Drücken Sie die Endklemme direkt in die Schiene und setzen Sie das zweite Solarmodul ein

Step2: Tightening the bolt of mid clamp

Schritt2: Anziehen der Schraube der Endklemme



Completed
Fertig



3.8 Install railing cap

3.8 Installieren Sie die Schienenkappe

Step1: Directly press the rail cap into both ends of rails

Schritt1: Drücken Sie die Schienenkappe direkt in beide Schienenenden

Purchaser/End User/Installer Notice:

Purchasers should confirm whether they are able to install this product and obtain relevant permits in accordance with local laws and regulations, including but not limited to government, community, adjacent property owners, and property rights holders.

Purchasers should engage qualified installers, professionals, or self-install only where permitted by law.

Purchasers should also ensure that the installation supports the building or its accessories safely and meets installation requirements, and is sufficient to support the product and its photovoltaic power generation system for over 20 years.

Purchasers should not install or use this product in environments with corrosive air or water, such as acids or alkalis in the vicinity.

Purchasers should fully assess and bear the consequences of product installation and usage and their impact on the surroundings, including but not limited to potential lightning strikes, electrical or magnetic conduction, light reflection/pollution, obstruction of passage, collision with people, snow accumulation and ice shedding, depreciation of buildings, and their consequences.

Purchasers are solely responsible for safety during installation, throughout the installation process, and subsequent usage, and/or any impact on third parties.

After installing the product, purchasers or their appointed installers should carry out waterproof, leak-proof, and anti-seepage construction at the junction of the product and the building to protect the building supporting the product, and conduct periodic inspections and maintenance in the future (at intervals not exceeding 1 year).

Purchasers should be aware that nothing other than the photovoltaic power generation system should be supported on this product, and no additional weight should be placed on the product during installation or subsequent usage, particularly human suspension or leaning. It should not be used for any purpose other than supporting photovoltaic brackets. Purchasers should be aware that nothing other than the photovoltaic power generation battery system should be supported on this product, and no additional weight should be placed on the product during installation or subsequent usage,

particularly human suspension or leaning. It should not be used for any purpose other than supporting photovoltaic brackets.

We shall not be liable for any consequences resulting from failure to comply with local legal requirements and/or failure to follow instructions, warnings, etc., during the installation of this product, nor shall we be liable for any losses to the supporting building or any third party resulting from the installation process or subsequent usage, nor shall we be liable for any multiple installations, disassembly and reuse, or second-hand purchases of this product.